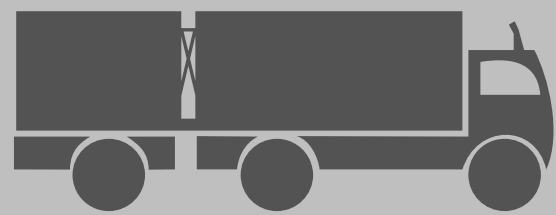


Recent research on risks from...

LIVING NEAR BUSY ROADS OR TRAFFIC POLLUTION



Who is at risk, and what might the risks be?

BABIES

- weigh less at birth
- be born early (premature)
- have problems with behavior, learning or even autism



PREGNANT WOMEN

- pregnancy problems
- high blood pressure



CHILDREN

- asthma
- go to the hospital for asthma
- ear, nose, throat infections
- smaller lungs for life
- obesity



ADULTS

- heart disease
- stroke



TEENAGERS

- smaller lungs for life



SENIORS

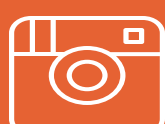
- heart attacks
- lung problems
- memory problems
- shorter life



USC Environmental Health Centers



@USCEnviroHealth



@USCEHC



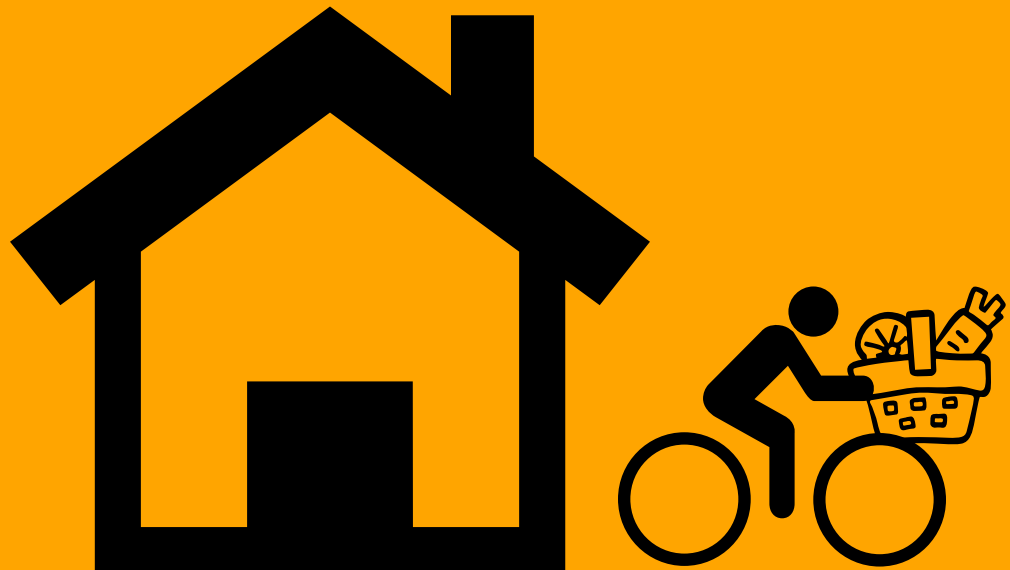
ejresearchlab.usc.edu

Supported by: National Institute of Environmental Health Sciences (Grants #5P30ES007048 and #P01ES022845), Environmental Protection Agency (Grant # 83544101), The Kresge Foundation, and The California Wellness Foundation

WHAT YOU CAN DO:

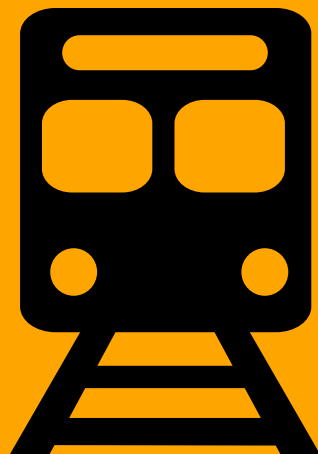


Join a group that is working to reduce air pollution.



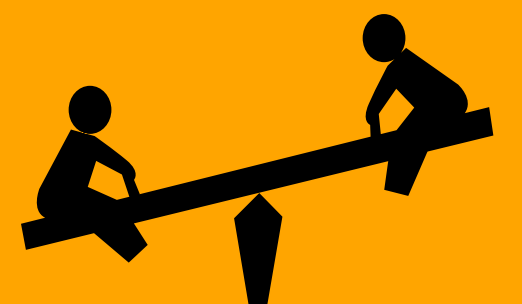
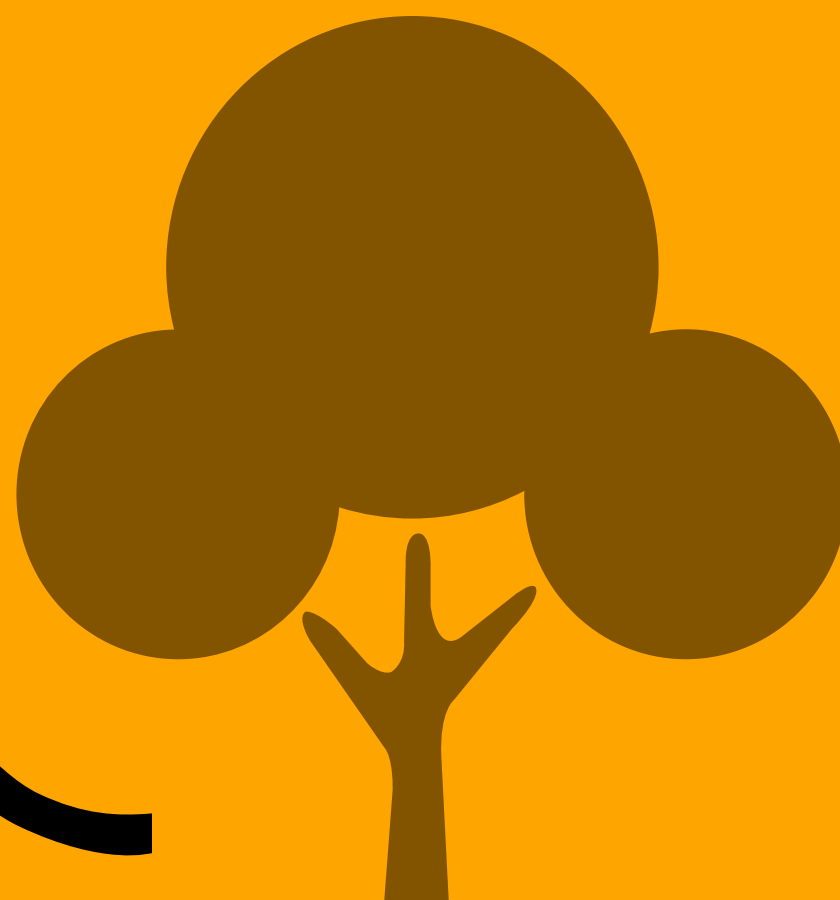
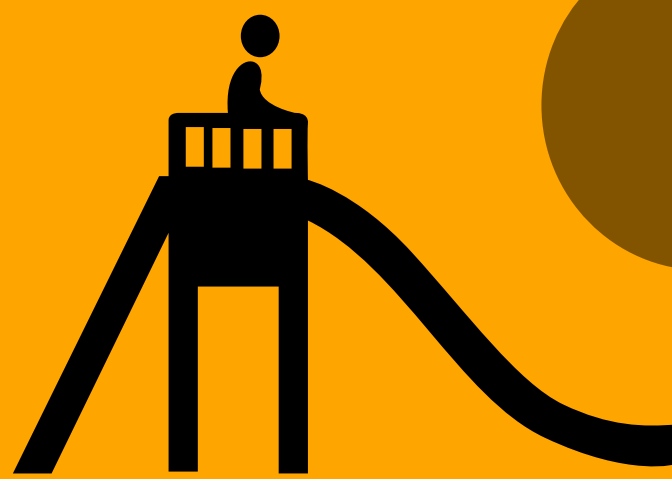
Consider biking instead of driving for trips close to home.

Carpool to school or work or use public transit.



Support building more public transit (such as buses and rail lines) so that fewer people have to use cars.

Learn more about pollution in your own community.

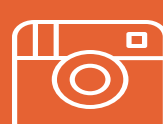


Infographic: Wendy Gutschow/USC

USC Environmental Health Centers



@USCEnviroHealth



@USCEHC



ejresearchlab.usc.edu

Supported by: National Institute of Environmental Health Sciences (Grants #5P30ES007048 and #P01ES022845), Environmental Protection Agency (Grant # 83544101), The Kresge Foundation, and The California Wellness Foundation